

SPECK SQUARED



SPECK SQUARED 3 STARS



Speck Squared smoked 3 stars WHOLE

3 months of maturing

Cod.
0101



4,90 kg/pc



CT. M01 - 4 pc

CT. M03 - 2 pc

AVAILABLE
PACKAGING

CT. M05 - 1 pc

Speck Squared smoked 3 stars WHOLE vac.

3 months of maturing

Cod.
0102



4,90 kg/pc



CT. M01 - 4 pc

CT. M03 - 2 pc

AVAILABLE
PACKAGING

CT. M05 - 1 pc

Speck Squared smoked 3 stars 1/2 vac.

3 months of maturing

Cod.
0103



2,45 kg/pc



CT. M01 - 8 pc

CT. M03 - 4 pc

AVAILABLE
PACKAGING

CT. M05 - 2 pc

Speck Squared smoked 3 stars 1/4 vac.

3 months of maturing

Cod.
0104



1,20 kg/pc



CT. M01 - 16 pc

CT. M03 - 8 pc

AVAILABLE
PACKAGING

CT. M05 - 4 pc

SPECK SQUARED 4 STARS



Speck Squared smoked 4 stars WHOLE

4 months of maturing

Cod.
0111



4,70 kg/pc



CT. M01 - 4 pc

CT. M03 - 2 pc

AVAILABLE
PACKAGING

CT. M05 - 1 pc

Speck Squared smoked 4 stars WHOLE vac.

4 months of maturing

Cod.
0112



4,70 kg/pc



CT. M01 - 4 pc

CT. M03 - 2 pc

AVAILABLE
PACKAGING

CT. M05 - 1 pc

Speck Squared smoked 4 stars 1/2 vac.

4 months of maturing

Cod.
0113



2,35 kg/pc



CT. M01 - 8 pc

CT. M03 - 4 pc

AVAILABLE
PACKAGING

CT. M05 - 2 pc

Speck Squared smoked 4 stars 1/4 vac.

4 months of maturing

Cod.
0114



1,10 kg/pc



CT. M01 - 20 pc

CT. M03 - 12 pc

AVAILABLE
PACKAGING

CT. M05 - 4 pc

SPECK SQUARED 4 STARS



Speck Squared smoked 4 stars 1/6 vac.

4 months of maturing



0,70 kg/pc



CT. M01 - 30 pc

CT. M03 - 18 pc

AVAILABLE
PACKAGING

CT. M05 - 6 pc

Cod.
0115

Speck Squared smoked 4 stars 1/8 vac.

4 months of maturing



0,56 kg/pc



CT. M01 - 50 pc

CT. M03 - 30 pc

AVAILABLE
PACKAGING

CT. M05 - 10 pc

Cod.
0116

SPECK SQUARED 5 STARS



Speck Squared smoked 5 stars WHOLE

5 months of maturing

Cod.
0121



4,50 kg/pc



CT. M01 - 4 pc

CT. M03 - 2 pc

AVAILABLE
PACKAGING

CT. M05 - 1 pc

Speck Squared smoked 5 stars WHOLE vac.

5 months of maturing

Cod.
0122



4,50 kg/pc



CT. M01 - 4 pc

CT. M03 - 2 pc

AVAILABLE
PACKAGING

CT. M05 - 1 pc

Speck Squared smoked 5 stars 1/2 vac.

5 months of maturing

Cod.
0123



2,25 kg/pc



CT. M01 - 8 pc

CT. M03 - 4 pc

AVAILABLE
PACKAGING

CT. M05 - 2 pc

Speck Squared smoked 5 stars 1/4 vac.

5 months of maturing

Cod.
0124



1,00 kg/pc



CT. M01 - 20 pc

CT. M03 - 12 pc

AVAILABLE
PACKAGING

CT. M05 - 4 pc

SPECK SQUARED 5 STARS



Speck Squared smoked 5 stars 1/6 vac.

5 months of maturing



Cod.
0125



0,60 kg/pc



CT. M01 - 30 pc

CT. M03 - 18 pc

AVAILABLE
PACKAGING

CT. M05 - 6 pc

Speck Squared smoked 5 stars 1/8 vac.

5 months of maturing



Cod.
0126



0,45 kg/pc



CT. M01 - 50 pc

CT. M03 - 30 pc

AVAILABLE
PACKAGING

CT. M05 - 10 pc

Speck Squared smoked 5 stars 1/10 vac.

5 months of maturing



Cod.
0129



0,30 kg/pc



CT. M01 - 60 pc

CT. M03 - 36 pc

AVAILABLE
PACKAGING

CT. M05 - 24 pc

SPECK CLASSIC



SPECK CLASSIC 3 STARS



Speck Classic smoked 3 stars WHOLE

3 months of maturing



4,90 kg/pc



CT. M01 - 4 pc

CT. M03 - 2 pc

AVAILABLE
PACKAGING

CT. M05 - 1 pc

Cod.
2101

Speck Classic smoked 3 stars WHOLE vac.

3 months of maturing



4,90 kg/pc



CT. M01 - 4 pc

CT. M03 - 2 pc

AVAILABLE
PACKAGING

CT. M05 - 1 pc

Cod.
2102

Speck Classic smoked 3 stars 1/2 vac.

3 months of maturing



2,45 kg/pc



CT. M01 - 8 pc

CT. M03 - 4 pc

AVAILABLE
PACKAGING

CT. M05 - 2 pc

Cod.
2103

Speck Classic smoked 3 stars 1/4 vac.

3 months of maturing



1,20 kg/pc



CT. M01 - 16 pc

CT. M03 - 8 pc

AVAILABLE
PACKAGING

CT. M05 - 4 pc

Cod.
2104

SPECK CLASSIC 4 STARS



Speck Classic smoked 4 stars WHOLE

4 months of maturing

Cod.
2111



4,70 kg/pc



CT. M01 - 4 pc

CT. M03 - 2 pc

AVAILABLE
PACKAGING

CT. M05 - 1 pc

Speck Classic smoked 4 stars WHOLE vac.

4 months of maturing

Cod.
2112



4,70 kg/pc



CT. M01 - 4 pc

CT. M03 - 2 pc

AVAILABLE
PACKAGING

CT. M05 - 1 pc

Speck Classic smoked 4 stars 1/2 vac.

4 months of maturing

Cod.
2113



2,35 kg/pc



CT. M01 - 8 pc

CT. M03 - 4 pc

AVAILABLE
PACKAGING

CT. M05 - 2 pc

Speck Classic smoked 4 stars 1/4 vac.

4 months of maturing

Cod.
2114



1,10 kg/pc



CT. M01 - 20 pc

CT. M03 - 8 pc

AVAILABLE
PACKAGING

CT. M05 - 4 pc

SPECK CLASSIC 4 STARS



Speck Classic smoked 4 stars 1/6 vac.

4 months of maturing



0,70 kg/pc



CT. M01 - 30 pc

CT. M03 - 18 pc

AVAILABLE
PACKAGING

CT. M05 - 6 pc

Cod.
2115

Speck Classic smoked 4 stars 1/8 vac.

4 months of maturing



0,56 kg/pc



CT. M01 - 50 pc

CT. M03 - 30 pc

AVAILABLE
PACKAGING

CT. M05 - 10 pc

Cod.
2116

SPECK CLASSIC 5 STARS



Speck Classic smoked 5 stars WHOLE

5 months of maturing



4,50 kg/pc



CT. M01 - 4 pc

CT. M03 - 2 pc

AVAILABLE
PACKAGING

CT. M05 - 1 pc

Cod.
2121

Speck Classic smoked 5 stars WHOLE vac.

5 months of maturing



4,50 kg/pc



CT. M01 - 4 pc

CT. M03 - 2 pc

AVAILABLE
PACKAGING

CT. M05 - 1 pc

Cod.
2122

Speck Classic smoked 5 stars 1/2 vac.

5 months of maturing



2,25 kg/pc



CT. M01 - 8 pc

CT. M03 - 4 pc

AVAILABLE
PACKAGING

CT. M05 - 2 pc

Cod.
2123

Speck Classic smoked 5 stars 1/4 vac.

5 months of maturing



1,00 kg/pc



CT. M01 - 20 pc

CT. M03 - 8 pc

AVAILABLE
PACKAGING

CT. M05 - 4 pc

Cod.
2124

SPECK CLASSIC 5 STARS



Speck Classic smoked 5 stars 1/6 vac.

5 months of maturing



0,60 kg/pc



CT. M01 - 30 pc

CT. M03 - 18 pc

AVAILABLE
PACKAGING

CT. M05 - 6 pc

Cod.
2125

Speck Classic smoked 5 stars 1/8 vac.

5 months of maturing



0,45 kg/pc



CT. M01 - 50 pc

CT. M03 - 30 pc

AVAILABLE
PACKAGING

CT. M05 - 10 pc

Cod.
2126

SPECK ALTO ADIGE P.G.I.



SPECK ALTO ADIGE P.G.I.

Speck Alto Adige Classic WHOLE

Speck Classic P.G.I.
22 weeks of maturing

Cod.
2131



4,20 kg/pc



CT. M01 - 4 pc

CT. M03 - 2 pc

AVAILABLE
PACKAGING

CT. M05 - 1 pc

Speck Alto Adige Classic WHOLE vac.

Speck Classic P.G.I.
22 weeks of maturing

Cod.
2132



4,20 kg/pc



CT. M01 - 4 pc

CT. M03 - 2 pc

AVAILABLE
PACKAGING

CT. M05 - 1 pc

Speck Alto Adige Classic 1/2 vac.

Speck Classic P.G.I.
22 weeks of maturing

Cod.
2133



2,10 kg/pc



CT. M01 - 8 pc

CT. M03 - 4 pc

AVAILABLE
PACKAGING

CT. M05 - 2 pc

Speck Alto Adige Classic 1/4 vac.

Speck Classic P.G.I.
22 weeks of maturing

Cod.
2134



1,00 kg/pc



CT. M01 - 20 pc

CT. M03 - 8 pc

AVAILABLE
PACKAGING

CT. M05 - 4 pc

SPECK CLASSIC ALTO ADIGE P.G.I.

Speck Alto Adige Classic 1/6 vac.

Speck Classic P.G.I.
22 weeks of maturing

Cod.
2135



0,50 kg/pc



CT. M01 - 30 pc

CT. M03 - 18 pc

AVAILABLE
PACKAGING

CT. M05 - 6 pc

Speck Alto Adige Classic 1/8 vac.

Speck Classic P.G.I.
22 weeks of maturing

Cod.
2136



0,40 kg/pc



CT. M01 - 50 pc

CT. M03 - 30 pc

AVAILABLE
PACKAGING

CT. M05 - 10 pc

Speck Alto Adige P.G.I. Squared smoked WHOLE

Speck Squared P.G.I.
22 weeks of maturing

Cod.
0131



4,20 kg/pc



CT. M01 - 4 pc

CT. M03 - 2 pc

AVAILABLE
PACKAGING

CT. M05 - 1 pc

Speck Alto Adige P.G.I. Squared smoked WHOLE vac.

Speck Squared P.G.I.
22 weeks of maturing

Cod.
0132



4,20 kg/pc



CT. M01 - 4 pc

CT. M03 - 2 pc

AVAILABLE
PACKAGING

CT. M05 - 1 pc

SPECK SQUARED ALTO ADIGE P.G.I.

Speck Alto Adige P.G.I. Squared smoked 1/2 vac.

Speck Squared P.G.I.
22 weeks of maturing

Cod.
0133



2,10 kg/pc



CT. M01 - 8 pc

CT. M03 - 4 pc

AVAILABLE
PACKAGING

CT. M05 - 2 pc

Speck Alto Adige P.G.I. Squared smoked 1/4 vac.

Speck Squared P.G.I.
22 weeks of maturing

Cod.
0134



1,00 kg/pc



CT. M01 - 20 pc

CT. M03 - 12 pc

AVAILABLE
PACKAGING

CT. M05 - 4 pc

Speck Alto Adige P.G.I. Squared smoked 1/6 vac.

Speck Squared P.G.I.
22 weeks of maturing

Cod.
0135



0,50 kg/pc



CT. M01 - 30 pc

CT. M03 - 18 pc

AVAILABLE
PACKAGING

CT. M05 - 6 pc

Speck Alto Adige P.G.I. Squared smoked 1/8 vac.

Speck Squared P.G.I.
22 weeks of maturing

Cod.
0136



0,40 kg/pc



CT. M01 - 28 pc

CT. M03 - 21 pc

AVAILABLE
PACKAGING

CT. M05 - 14 pc

OTHER SPECK



SPECK WITHOUT ROLL

Speck Squared
3 stars **WHOLE vac.**



Cod.
0107



4,40 kg/pc



CT. M01 - 4 pc

CT. M03 - 2 pc

AVAILABLE
PACKAGING

CT. M05 - 1 pc

Speck Squared
3 stars 1/2 **vac.**



Cod.
0108



2,20 kg/pc



CT. M01 - 8 pc

CT. M03 - 4 pc

AVAILABLE
PACKAGING

CT. M05 - 2 pc

Speck Squared
4 stars **WHOLE vac.**



Cod.
0117



4,20 kg/pc



CT. M01 - 4 pc

CT. M03 - 2 pc

AVAILABLE
PACKAGING

CT. M05 - 1 pc

Speck Squared
4 stars 1/2 **vac.**



Cod.
0118



2,10 kg/pc



CT. M01 - 8 pc

CT. M03 - 4 pc

AVAILABLE
PACKAGING

CT. M05 - 2 pc

SPECK WITHOUT ROLL

Speck Squared
5 stars WHOLE vac.



4,00 kg/pc



CT. M01 - 4 pc

CT. M03 - 2 pc

AVAILABLE
PACKAGING

CT. M05 - 1 pc

Cod.
0127

Speck Squared
5 stars 1/2 vac.



2,00 kg/pc



CT. M01 - 8 pc

CT. M03 - 4 pc

AVAILABLE
PACKAGING

CT. M05 - 2 pc

Cod.
0128

Speck Alto Adige
P.G.I. Squared
WHOLE vac.



4,00 kg/pc



CT. M01 - 4 pc

CT. M03 - 2 pc

AVAILABLE
PACKAGING

CT. M05 - 1 pc

Cod.
0137

Speck Alto Adige
P.G.I. Squared
1/2 vac.



2,00 kg/pc



CT. M01 - 8 pc

CT. M03 - 4 pc

AVAILABLE
PACKAGING

CT. M05 - 2 pc

Cod.
0138

SPECK READY FOR SLICING

Speck 3 Stars WHOLE vac.

Speck ready for slicing

Cod.
109



4,70 kg/pc



CT. M01 - 4 pc

CT. M03 - 2 pc

AVAILABLE
PACKAGING

CT. M05 - 1 pc

Speck 4 Stars WHOLE vac.

Speck ready for slicing

Cod.
119



4,40 kg/pc



CT. M01 - 4 pc

CT. M03 - 2 pc

AVAILABLE
PACKAGING

CT. M05 - 1 pc

Speck 5 Stars WHOLE vac.

Speck ready for slicing

Cod.
129



4,20 kg/pc



CT. M01 - 4 pc

CT. M03 - 2 pc

AVAILABLE
PACKAGING

CT. M05 - 1 pc

SPECK ANTICA RISERVA

Speck Antica Riserva WHOLE vac.

Speck with topside

Cod.
0202



5,50 kg/pc



J - 100 pc

M01 - 3 pc

AVAILABLE
PACKAGING

Speck Antica Riserva 1/2 vac.

Speck with topside

Cod.
0203



2,75 kg/pc



CT. M01 - 6 pc

CT. M03 - 2 pc

AVAILABLE
PACKAGING

SPECK MATTONELLA

**Speck Mattonella
without rind
WHOLE vac.**



Cod.
0217



5,00 kg/pc



CT. M14 - 4 pc

CT. J01 - 144 pc

AVAILABLE
PACKAGING

CT. J02 - 72 pc

**Speck Mattonella
"Silver"
without rind
WHOLE vac.**



Cod.
0220



4,20 kg/pc



CT. M14 - 4 pc

CT. J01 - 144 pc

AVAILABLE
PACKAGING

CT. J02 - 72 pc

Famiglia Larcher

LINEA GOURMET



SPECK FAMIGLIA LARCHER

Speck Fam. Larcher WHOLE

Meat of italian origin,
maturated for at least 8
months

Cod.
1301



6,50 kg/pc



CT. M01 - 3 pc

AVAILABLE
PACKAGING

Speck Fam. Larcher WHOLE vac.

Meat of italian origin,
maturated for at least 8
months

Cod.
1302



6,50 kg/pc



CT. M01 - 3 pc

AVAILABLE
PACKAGING

Speck Fam. Larcher 1/2 vac.

Meat of italian origin,
maturated for at least 8
months

Cod.
1303



3,25 kg/pc



CT. M01 - 4 pc

CT. M03 - 2 pc

AVAILABLE
PACKAGING

Speck Fam. Larcher 1/6 vac.

Meat of italian origin,
maturated for at least 8
months

Cod.
1305



1,00 kg/pc



CT. M03 - 12 pc

CT. M05 - 6 pc

AVAILABLE
PACKAGING

GUANCIALE FAMIGLIA LARCHER

Guanciale dolce Fam. Larcher WHOLE vac.

Meat of italian origin,
maturated for at least 5
months

Cod.
2406



1,6 - 2,4 kg/pc



CT. M01 - 10 pc

CT. M03 - 6 pc

AVAILABLE
PACKAGING

Guanciale dolce Fam. Larcher 1/2 vac.

Meat of italian origin,
maturated for at least 5
months

Cod.
2407



0,8 - 1,2 kg/pc



CT. M01 - 20 pc

CT. M03 - 12 pc

AVAILABLE
PACKAGING

MEZZENA FAMIGLIA LARCHER



Mezzena Fam. Larcher WHOLE

Meat of italian origin,
maturated for at least 5
months



12,50 kg/pc



S01 - 1 pc

AVAILABLE
PACKAGING

Cod.
900

Mezzena Fam. Larcher CUT vac.

Meat of italian origin,
maturated for at least 5
months



0,60 kg/pc



CT. M10 - 16 pc

CT. M18 - 6 pc

AVAILABLE
PACKAGING

Cod.
898

BACON



SMOKED BACON "OLD"

Smoked bacon "Old" WHOLE

3-4 weeks maturing



3,00 kg/pc



CT. M10 - 5 pc

CT. M20 - 2 pc

AVAILABLE
PACKAGING

Cod.
2401

Smoked bacon "Old" WHOLE vac.

3-4 weeks maturing



3,00 kg/pc



CT. M10 - 5 pc

CT. M20 - 2 pc

AVAILABLE
PACKAGING

Cod.
2402

Smoked bacon "Old" 1/2 vac.

3-4 weeks maturing



1,50 kg/pc



CT. M01 - 14 pc

CT. M02 - 7 pc

CT. M03 - 4 pc

AVAILABLE
PACKAGING

Cod.
2403

Smoked bacon "Old" SLICES vac.

3-4 weeks maturing



0,24 kg/pc



CT. M03 - 50 pc

CT. M05 - 20 pc

CT. M08 - 10 pc

AVAILABLE
PACKAGING

Cod.
2405

SMOKED BACON "OLD" DOPPIA

Smoked bacon "Old" doppia 1/2 vac.

3-4 Weeks maturing,
double



Cod.
2503



3,00 kg/pc



CT. M01 - 8 pc

CT. M05 - 2 pc

AVAILABLE
PACKAGING

CT. M08 - 1 pc

SMOKED BACON "TWENTY"

Smoked bacon "Twenty" WHOLE

2 Weeks maturing



Cod.
2451



3,50 kg/pc



CT. M10 - 5 pc

CT. M20 - 2 pc

AVAILABLE
PACKAGING

Smoked bacon "Twenty" WHOLE vac.

2 Weeks maturing



Cod.
2452



3,50 kg/pc



CT. M10 - 5 pc

CT. M20 - 2 pc

AVAILABLE
PACKAGING

Smoked bacon "Twenty" 1/2 vac.

2 Weeks maturing



Cod.
2453



1,70 kg/pc



CT. M01 - 14 pc

CT. M02 - 7 pc

CT. M03 - 4 pc

AVAILABLE
PACKAGING

BACON "BIANCA TWENTY"

Bacon "Bianca Twenty" WHOLE

2 Weeks maturing, not smoked

Cod.
2491



3,50 kg/pc



CT. M10 - 5 pc

CT. M20 - 2 pc

AVAILABLE
PACKAGING

Bacon "Bianca Twenty" WHOLE vac.

2 Weeks maturing, not smoked

Cod.
2492



3,50 kg/pc



CT. M10 - 5 pc

CT. M20 - 2 pc

AVAILABLE
PACKAGING

Bacon "Bianca Twenty" 1/2 vac.

2 Weeks maturing, not smoked

Cod.
2493



1,70 kg/pc



CT. M01 - 14 pc

CT. M02 - 7 pc

CT. M03 - 4 pc

AVAILABLE
PACKAGING

BACON WITH CHILI AND WITH PEPPER

Bacon with Chili WHOLE vac.



Cod.
2462



3,50 kg/pc



CT. M10 - 5 pc

CT. M20 - 2 pc

AVAILABLE
PACKAGING

Bacon with Chili 1/2 vac.



Cod.
2463



1,70 kg/pc



CT. M01 - 14 pc

CT. M02 - 7 pc

AVAILABLE
PACKAGING

Bacon with pepper WHOLE vac.



Cod.
2422



3,50 kg/pc



CT. M10 - 5 pc

CT. M20 - 2 pc

AVAILABLE
PACKAGING

Bacon with pepper 1/2 vac.



Cod.
2423



1,70 kg/pc



CT. M01 - 14 pc

CT. M02 - 7 pc

AVAILABLE
PACKAGING

CT. M03 - 4 pc

BACON COPPATA

**Bacon Coppata
1/2 vac.**



2,20 kg/pc



CT. M99 - 6 pc

AVAILABLE
PACKAGING

Cod.
2490

COOKED BACON

**Cooked and smoked Bacon
"Singola" 1/2 vac.**



2,10 kg/pc



CT. M99 - 6 pc

AVAILABLE
PACKAGING

Cod.
3030

**Cooked and smoked Bacon
"Doppia" 1/2 vac.**



4,30 kg/pc



CT. M99 - 4 pc

AVAILABLE
PACKAGING

Cod.
3028

**Cooked Bacon
traditional
1/2 vac.**



2,00 kg/pc



CT. M01 - 10 pc

AVAILABLE
PACKAGING

Cod.
3032

RAW SAUSAGES



RAW SAUSAGES

**Unica Classica
1/2 vac.**



0,70 kg/pc



CT. M03 - 18 pc

CT. M05 - 12 pc

AVAILABLE
PACKAGING

Cod.
8808

**Unica Classica
SLICE vac.**



0,35 kg/pc



CT. M03 - 30 pc

CT. M05 - 10 pc

AVAILABLE
PACKAGING

Cod.
8809

**Unica refined
with Lagrein
1/2 vac.**



0,70 kg/pc



CT. M03 - 18 pc

CT. M05 - 12 pc

AVAILABLE
PACKAGING

Cod.
38810

**Unica refined
with Lagrein
vac. vac.**



0,35 kg/pc



CT. M03 - 30 pc

CT. M05 - 10 pc

AVAILABLE
PACKAGING

Cod.
38811

RAW SAUSAGES

**Unica refined
with Beer
1/2 vac.**



0,70 kg/pc



CT. M03 - 18 pc

CT. M05 - 12 pc

AVAILABLE
PACKAGING

Cod.
48808

**Unica refined
with Beer
SLICE vac.**



0,35 kg/pc



CT. M03 - 30 pc

CT. M05 - 10 pc

AVAILABLE
PACKAGING

Cod.
48809

**Unica refined
with Cranberry
1/2 vac.**



0,70 kg/pc



CT. M03 - 18 pc

CT. M05 - 12 pc

AVAILABLE
PACKAGING

Cod.
58808

**Unica refined
with Cranberry
SLICE vac.**



0,35 kg/pc



CT. M03 - 30 pc

CT. M05 - 10 pc

AVAILABLE
PACKAGING

Cod.
58809

RAW SAUSAGES

**Unica refined
with Mountain
herbs
SLICE vac.**



0,35 kg/pc



CT. M03 - 30 pc

CT. M05 - 10 pc

AVAILABLE
PACKAGING

Cod.
68809

**Unica refined
with Juniper
SLICE vac.**



0,35 kg/pc



CT. M03 - 30 pc

CT. M05 - 10 pc

AVAILABLE
PACKAGING

Cod.
78809

RAW SAUSAGES

**Bresaola
Punta D'Anca
1/2 vac.**



Cod.
6071



1,70 kg/pc



CT. M99 - 4 pc

AVAILABLE
PACKAGING

**Coppa seasoned
WHOLE**



Cod.
6060



1,50 kg/pc



CT. M03 - 6 pc

CT. M05 - 3 pc

AVAILABLE
PACKAGING

**Coppa seasoned
1/2 vac.**



Cod.
6061



0,75 kg/pc



CT. M03 - 12 pc

CT. M05 - 6 pc

AVAILABLE
PACKAGING

**Lardo with herbs
WHOLE vac.**



Cod.
6056



5,70 kg/pc



CT. M99 - 2 pc

AVAILABLE
PACKAGING

RAW SAUSAGES

Lardo with herbs
1/2 vac.



2,20 kg/pc



CT. M99 - 3 pc

AVAILABLE
PACKAGING

Cod.
6058

Lardo with herbs
1/8 vac.



0,23 kg/pc



CT. M03 - 32 pc

CT. M12 - 8 pc

AVAILABLE
PACKAGING

Cod.
6059

Filet Tartufino
1/2 vac.



0,22 kg/pc



CT. M03 - 40 pc

CT. M05 - 20 pc

AVAILABLE
PACKAGING

Cod.
6086

Gourmet fillet
1/2 vac.



0,22 kg/pc



CT. M03 - 40 pc

CT. M05 - 20 pc

AVAILABLE
PACKAGING

Cod.
6087

RAW SAUSAGES

**Smoked Guanciale
WHOLE vac.**



Cod.
2506



1,6 - 2,4 kg/pc



CT. M01 - 10 pc

CT. M03 - 6 pc

AVAILABLE
PACKAGING

**Smoked Guanciale
1/2 vac.**



Cod.
2507



0,8 - 1,2 kg/pc



CT. M01 - 20 pc

CT. M03 - 12 pc

AVAILABLE
PACKAGING

**Guanciale
WHOLE vac.**



Cod.
2606



1,6 - 2,4 kg/pc



CT. M01 - 10 pc

CT. M03 - 6 pc

AVAILABLE
PACKAGING

**Guanciale
1/2 vac.**



Cod.
2607



0,8 - 1,2 kg/pc



CT. M01 - 20 pc

CT. M03 - 12 pc

AVAILABLE
PACKAGING

RAW SAUSAGES

Guanciale SLICE

Cod.
2608



0,23 kg/pc



CT. M03 - 32 pc

CT. M12 - 8 pc

AVAILABLE
PACKAGING

Carne salada sliced vac.

Cod.
8376



0,10 kg/pc



CT. M05 - 40 pc

CT. M12 - 15 pc

AVAILABLE
PACKAGING

Carne salada 1/2 vac. box of 2 pieces

Cod.
8374



2,20 kg/pc



B02 - 2 pc

AVAILABLE
PACKAGING

Carne salada 1/2 vac. box of 5 pieces

Cod.
8375



2,20 kg/pc



B01 - 5 pc

AVAILABLE
PACKAGING

SALAMI



SALAMI

Mortandella Mendel vac.



Cod.
6053



0,30 kg/pc



CT. M01 - 60 pc

CT. M03 - 30 pc

AVAILABLE
PACKAGING

CT. M05 - 17 pc

Mortandella Mendel Gastro vac.



Cod.
6064



0,85 kg/pc



CT. M01 - 24 pc

CT. M03 - 12 pc

AVAILABLE
PACKAGING

Salami "Pepper and salt"



Cod.
6010



0,175 kg/pc



CT. M20 - 40 pc

AVAILABLE
PACKAGING

Salami "Goloso"



Cod.
6014



0,30 kg/pc



CT. M20 - 30 pc

AVAILABLE
PACKAGING

SALAMI

Deer Salami vac.



Cod.
6023



0,15 kg/pc



CT. M03 - 52 pc

CT. M05 - 26 pc

AVAILABLE
PACKAGING

CT. M08 - 12 pc

Wild boar Salami vac.



Cod.
6025



0,15 kg/pc



CT. M03 - 52 pc

CT. M05 - 26 pc

AVAILABLE
PACKAGING

CT. M08 - 12 pc

Roe deer Salami vac.



Cod.
6026



0,15 kg/pc



CT. M03 - 52 pc

CT. M05 - 26 pc

AVAILABLE
PACKAGING

CT. M08 - 12 pc

SALAMI

Salami Napoli curved

Cod.
6033



0,40 kg/pc



CT. M03 - 16 pc

CT. M05 - 8 pc

AVAILABLE
PACKAGING

Salami Napoli vac.

Cod.
6034



0,15 kg/pc



CT. M99 - 12 pc

CT. M20 - 6 pc

AVAILABLE
PACKAGING

Kaminwurzten 40 pieces in modified atmosphere

Cod.
6005



2,40 kg/pc



CT. M01 - 6 pc

CT. M03 - 3 pc

AVAILABLE
PACKAGING

Kaminwurzten 4 pieces in modified atmosphere

Cod.
6006



0,23 kg/pc



CT. M01 - 70 pc

CT. M03 - 35 pc

CT. M05 - 20 pc

AVAILABLE
PACKAGING

SALAMI

**Hungarian salami
WHOLE**

Cod.
6050



3,5 kg/pc



CT. M03 - 6 pc

CT. M10 - 4 pc

AVAILABLE
PACKAGING

CT. M02 - 2 pc

**Hungarian salami
1/2 vac.**

Cod.
6051



1,75 kg/pc



CT. M01 - 8 pc

CT. M20 - 4 pc

AVAILABLE
PACKAGING

COOKED



COOKED

**Tyrolean cooked
ham 1/2 vac.**



Cod.
4006



3,50 kg/pc



CT. M01 - 6 pc

CT. M03 - 3 pc

AVAILABLE
PACKAGING

**Tyrolean cooked
ham 1/6 vac.**



Cod.
4007



1,00 kg/pc



CT. M03 - 10 pc

AVAILABLE
PACKAGING

**Baked Porchetta
1/2 vac.**



Cod.
4038



6,00 kg/pc



CT. M99 - 3 pc

AVAILABLE
PACKAGING

COOKED

**Cooked topside
"Weekend" ham
1/2 vac.**

Cod.
4014



1,10 kg/pc



CT. M03 - 10 pc

CT. M08 - 2 pc

AVAILABLE
PACKAGING

**Center-cut pork
loin "Carrè"
1/2 vac.**

Cod.
4500



3,50 kg/pc



CT. M01 - 4 pc

CT. M03 - 2 pc

AVAILABLE
PACKAGING

**Center-cut pork
loin "Carrè"
sliced vac.**

Cod.
4501



0,20 kg/pc



CT. M03 - 20 pc

AVAILABLE
PACKAGING

**Roast pork- knuckl
vac.**

Cod.
8614



1,00 kg/pc



CT. M03 - 12 pc

AVAILABLE
PACKAGING

COOKED

**Cooked "Silver"
ham WHOLE vac.**

Cod.
4017



8,50 kg/pc



CT. M99 - 2 pc

AVAILABLE
PACKAGING

**Cooked "Silver"
ham 1/2 vac.**

Cod.
4018



4,25 kg/pc



CT. M99 - 4 pc

AVAILABLE
PACKAGING

**Prague-style ham
WHOLE vac.**

Cod.
4002



9,30 kg/pc



CT. M01 - 2 pc

AVAILABLE
PACKAGING

**Prague-style ham
1/2 vac.**

Cod.
4003



4,60 kg/pc



CT. M03 - 2 pc

AVAILABLE
PACKAGING

COOKED

**Cooked "Gold"
ham 1/2 vac.**



Cod.
4021



4,25 kg/pc



CT. M03 - 2 pc

AVAILABLE
PACKAGING

**Roasted Smoked
Beef vac.**



Cod.
4050



2,40 kg/pc



CT. M01 - 8 pc

CT. M03 - 4 pc

AVAILABLE
PACKAGING

COOKED SAUSAGES



COOKED SAUSAGES

**Würstel Snack
skinless 3 pieces
vac.**



0,25 kg/pc



CT. M01 - 72 pc

CT. M03 - 36 pc

AVAILABLE
PACKAGING

CT. M05 - 18 pc

Cod.
5051

**Würstel Meraner
3 pieces vac.**



0,27 kg/pc



CT. M05 - 15 pc

AVAILABLE
PACKAGING

Cod.
5064

**Würstel Servelade
2 pieces vac.**



0,25 kg/pc



CT. M05 - 16 pc

AVAILABLE
PACKAGING

Cod.
5069

**Lyoner
1/2 vac.**



1,70 kg/pc



CT. M01 - 10 pc

CT. M03 - 4 pc

AVAILABLE
PACKAGING

Cod.
5002

COOKED SAUSAGES

**Krakauer
1/2 vac.**

Cod.
5004



1,70 kg/pc



CT. M01 - 10 pc

CT. M03 - 4 pc

AVAILABLE
PACKAGING

**Lyoner with Olives
1/2 vac.**

Cod.
5006



1,70 kg/pc



CT. M01 - 10 pc

CT. M03 - 4 pc

AVAILABLE
PACKAGING

**Lyoner with
Peppers 1/2 vac.**

Cod.
5008



1,70 kg/pc



CT. M01 - 10 pc

CT. M03 - 4 pc

AVAILABLE
PACKAGING

CANEDERLI



CANEDERLI

Speck- Knödel
4 pieces



Cod.
0690



0,300 kg/pc



CT. M01 - 30 pc

CT. M03 - 15 pc

AVAILABLE
PACKAGING

Spinach- Knödel
4 pieces



Cod.
0692



0,300 kg/pc



CT. M01 - 30 pc

CT. M03 - 15 pc

AVAILABLE
PACKAGING

Cheese- Knödel
4 pieces



Cod.
0693



0,300 kg/pc



CT. M01 - 30 pc

CT. M03 - 15 pc

AVAILABLE
PACKAGING

SLICED AND DICED PRODUCTS



SLICED AND DICED PRODUCTS

**Speck sliced IGP
ca. 120g**



Cod.
515



0,10 kg/pc



E02 - 10 pc

AVAILABLE
PACKAGING

**Speck sliced
ca. 500g**



Cod.
511



0,50 kg/pc



E02 - 4 pc

AVAILABLE
PACKAGING

**Speck sliced
ca. 100g**



Cod.
512



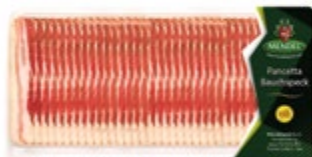
0,10 kg/pc



E02 - 10 pc

AVAILABLE
PACKAGING

**Pancetta sliced
ca. 500g**



Cod.
521



0,50 kg/pc



E02 - 4 pc

AVAILABLE
PACKAGING

SLICED AND DICED PRODUCTS

**Pancetta sliced
ca. 100g**

Cod.
522



0,10 kg/pc



E02 - 10 pc

AVAILABLE
PACKAGING

**Carne salada sliced
ca. 150-200g**

Cod.
8376



0,15-0,20 kg/pc



CT. M10 - 40 pc

AVAILABLE
PACKAGING

**Speck diced
ca. 2,5-3kg**

Cod.
600



2,50 - 3,00 kg/pc



CT. M01 - 6 pc

AVAILABLE
PACKAGING

**Pancetta smoked
diced
ca. 2,5-3kg**

Cod.
700



2,50 - 3,00 kg/pc



CT. M01 - 6 pc

AVAILABLE
PACKAGING

PRODUCTS FOR SLICING



PRODUCTS FOR SLICING

**Speck Mattonella
without rind
WHOLE vac.**



Cod.
0217



5,00 kg/pc



CT. M14 - 5 pc

CT. J01 - 140 pc

AVAILABLE
PACKAGING

CT. J02 - 70 pc

**Speck Mattonella
"Silver"
without rind
WHOLE vac.**



Cod.
0220



4,20 kg/pc



CT. M14 - 5 pc

CT. J01 - 160 pc

AVAILABLE
PACKAGING

CT. J02 - 80 pc

**Smoked bacon
"Old" double
without cartilage
1/2* vac.**



* also available *WHOLE*
with cod. 2504

Cod.
2503



3,00 kg/pc



CT. M01 - 8 pc

CT. M05 - 2 pc

AVAILABLE
PACKAGING

CT. M08 - 1 pc

**Cooked and
smoked Bacon
"Doppia" 1/2 vac.**



Cod.
3028



4,30 kg/pc



CT. M99 - 4 pc

AVAILABLE
PACKAGING

PRODUCTS FOR SLICING

Roasted smoked Beef vac.



Cod.
4050



2,40 kg/pc



CT. M01 - 8 pc

CT. M03 - 4 pc

AVAILABLE
PACKAGING

Mortandella Mendel Gastro vac.



Cod.
6064



0,85 kg/pc



CT. M01 - 24 pc

CT. M03 - 12 pc

AVAILABLE
PACKAGING